

GENI-Ant

The distributed sorter for a new material handling concept



The smarter way to sort any kind of item

- Continuous operations
- Extremely flexible system design
- Intelligent technology
- Suitable for standard and non-conveyable items
- Scalable investment

GENI-Ant, the newest sorter based on autonomous mobile robots

GENI-Ant is the new generation of smart sorting technology to increase the effectiveness of operations within logistics centres. GENI-Ant is a highly efficient sorter based on autonomous mobile robots that can be implemented in postal and express-courier hubs, distribution and e-commerce centres to maximise operational performance even in small and crowded facilities.

Continuous operations

With the smart auto-recharge system, the GENI-Ant functions continuously, re-charging batteries during normal operations and not requiring charging stations. GENI-Ant doesn't stop even for parcels loading and sorting: both operations are always carried out on the fly.

Extremely flexible system design

GENI-Ant is flexible for different types of layouts. Easy to expand options are possible by adding robots or increasing operational space; countless custom configurations meet your exact needs.

Intelligent technology

The embedded high performance Traffic Management System optimises travel paths whilst in operation, in real time. Traffic, obstacles and the distance to the final destination are calculated for the optimum route.

Suitable for standard and non-conveyable items

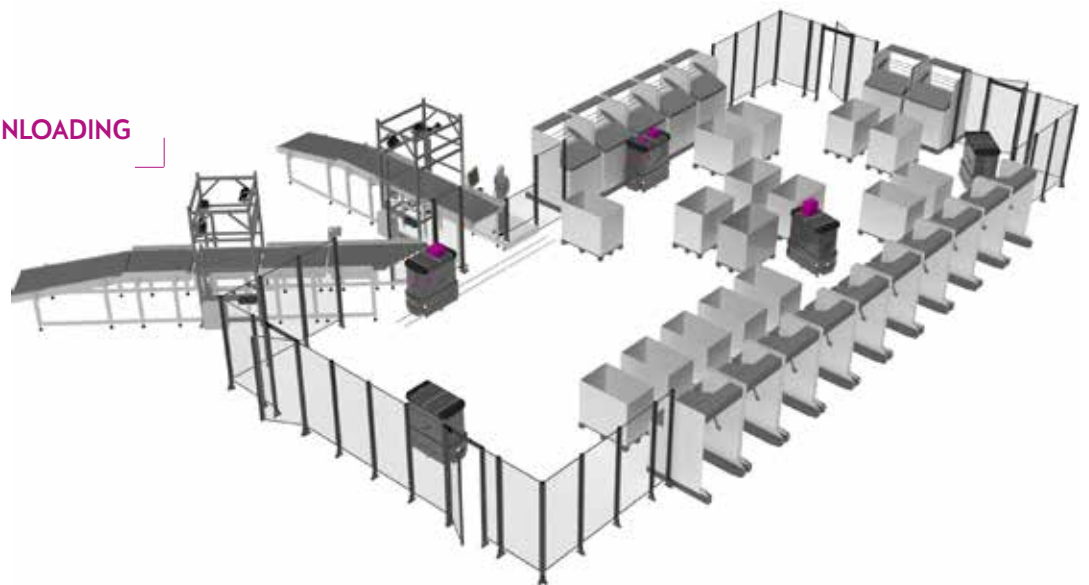
Due to easy loading and direct sorting into cages or boxes, the GENI-Ant handles non-conveyable, hard-to-handle and the smallest unconventional items with no issues, maintaining high-performance sorting rates.

Scalable investment

The number of robots is adjustable depending on the performance to achieve both current operational throughputs and future expansions with different flows, enabling business and operational continuity. GENI-Ant can be easily moved and installed in other facilities to optimize the ROI and meet new requirements.

Technical features(*)	
GENI-Ant height	550 mm - 1,250 mm
GENI-Ant configuration	single or double cell
Items size range	
Length	50 to 600 mm
Width	50 to 600 mm
Weight	up to 30 kg (2 x 15 kg)
Loading	manual or automatic

- SMALL FOOTPRINT
- UGLY AND SMALL PACKAGES
- MANY DESTINATIONS
- RECONFIGURABLE
- EASILY SCALABLE
- NO CHARGING TIME
- ON-THE-FLY LOADING & UNLOADING



(*)Actual system specifications are dependent upon layout configurations, product size and characteristics. Please contact us for customized specification and configuration.