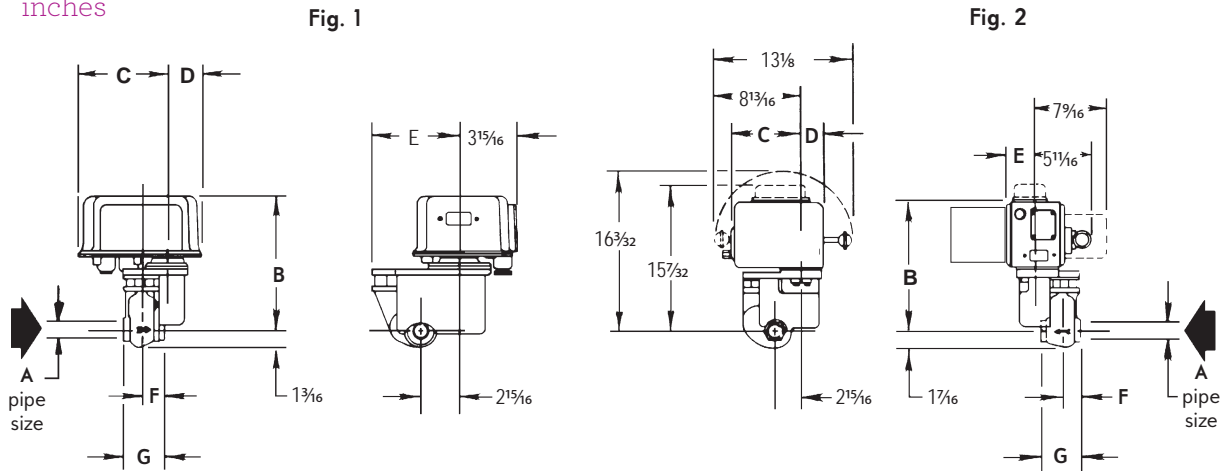


# North American Automatic Oil Shutoff Valves

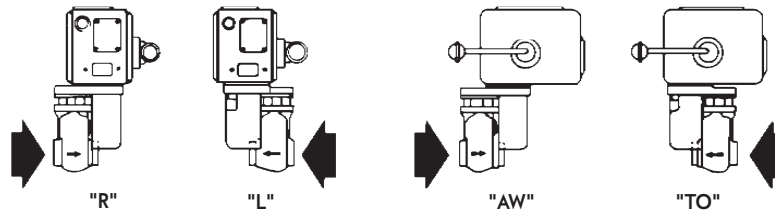
Dimensions 1516/1517

DIMENSIONS  
inches

½" through 1¼" valves with swinging gate bodies



Available Top Assembly Positions



Top Assembly and Body Flow Direction to be Specified on Order

Valve designation	Fig. no.	dimensions in inches							Wt, lb
		A	B	C	D	E	F	G	
1517, 1517U-01, -01-S	1	½	11 ½	6 7/32	2 23/32	6 7/16	1 11/16	3 3/16	30
1517, 1517U-0, -0-S	1	¾	11 ½	6 7/32	2 23/32	6 7/16	1 11/16	3 3/16	30
1516, 1516U-1, -1-S	2	1	13 13/32	7 5/8	2 3/8	3 ½	1 15/16	4 1/8	37
1517, 1517U-1, -1-S	2	1	13 13/32	7 5/8	2 3/8	3 ½	1 15/16	4 1/8	37
1516, 1516U-2, -2-S	2	1 ¼	13 13/32	7 5/8	2 3/8	3 ½	1 15/16	4 3/16	40
1517, 1517U-2, -2-S	2	1 ¼	13 13/32	7 5/8	2 3/8	3 ½	1 15/16	4 3/16	40

DIMENSIONS SHOWN ARE SUBJECT TO CHANGE. PLEASE OBTAIN CERTIFIED PRINTS FROM FIVES NORTH AMERICAN COMBUSTION, INC. IF SPACE LIMITATIONS OR OTHER CONSIDERATIONS MAKE EXACT DIMENSIONS(S) CRITICAL.

**WARNING:** Situations dangerous to personnel and property may exist with the operation and maintenance of any combustion equipment. The presence of fuels, oxidants, hot and cold combustion products, hot surfaces, electrical power in control and ignition circuits, etc., are inherent with any combustion application. Parts of this product may exceed 160F in operation and present a contact hazard. Fives North American Combustion, Inc. urges compliance with National Safety Standards and Insurance Underwriters' recommendations, and care in operation.