

SNM – Features

- Wide turndown
- Low maintenance
- High excess air capacity
- Clean burn on all commercial gases
- Direct spark or pilot ignition option
- Facility for mounting UV scanner
- Robust construction
- Square or round ignition tiles
- Suitable for pre-heated air up to 350°C
- Excellent flame stability

The range of SNM burners has been widely used on numerous applications over a period of many years. The robust cast iron construction without any moving parts proves ideal for industrial furnaces, forges and melting pots where low maintenance and a reliable heat source is a priority.

The SNM range covers capacities from 30kW to 1.5MW in six burner sizes.

As standard all burners are fitted with castable refractory ignition tiles suitable for temperatures up to 1600°C, although for special applications higher temperature tiles can be supplied. Tiles can also be supplied with stainless steel shrouds which give support when the burners are being installed on applications with fibre walls.

Air and gas is supplied independently to the burner, which is sealed into the furnace wall. The air and gas are thoroughly mixed in the burner head before combustion takes place within the burner tile. This design provides an extremely stable flame with high turndown capabilities.

It is possible to operate the burner with up to 500% excess air or up to 50% excess gas with good stability. The burner will operate successfully on most clean industrial gases.

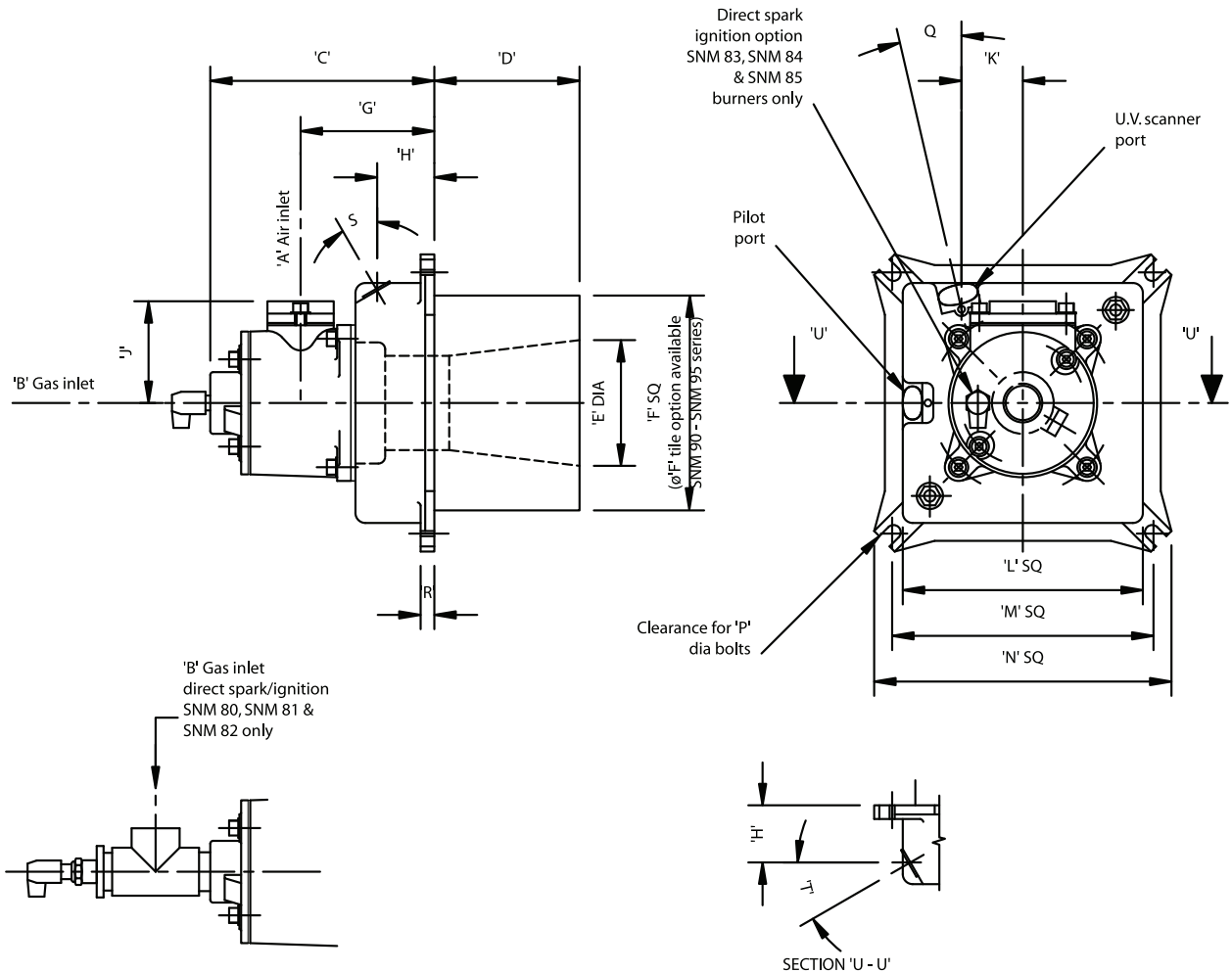
The degree of control that can be achieved is largely dependent on the design of the air and gas control equipment supplying the burner. Appropriate sizing of the supply lines and valves is important in achieving good burner performance (refer to FNAC).

Capacities and Specifications

Model No.	Air Pressure									
	17.5 mbar		35 mbar		52.5 mbar		70 mbar		87.5 mbar	
	Air Nm ³ /h	Capacity kW	Air Nm ³ /h	Capacity kW	Air Nm ³ /h	Capacity kW	Air Nm ³ /h	Capacity kW	Air Nm ³ /h	Capacity kW
SNM 80	31	29	42	41	53	50	61	61	68	65
SNM 81	57	54	80	76	99	93	114	107	127	120
SNM 82	119	112	168	158	206	193	238	224	267	251
SNM 83	225	211	316	297	388	365	447	420	500	470
SNM 84	463	435	655	615	801	753	925	870	1034	972
SNM 85	702	660	991	932	1214	1141	1403	1318	1568	1474

Note: Minimum gas pressure at burner head = 5 mbar.

Dimensions



Model No	Part No	Dimensions mm																	Weight kg	
		A	B	C	D	E	F	G	H	J	K	L	M	N	P	Q	R	S		T
SNM 80	3.05.037	Rp 1	Rc ³ / ₄	170	127	89	152	110	48	83	39	171	187	219	M10	15°	11	18°	15°	16.5
SNM 81	3.05.026	Rp 1	Rc ³ / ₄	170	127	102	152	110	48	83	44	171	187	219	M10	15°	11	30°	30°	15.5
SNM 82	3.04.028	Rp1 ¹ / ₂	Rc 1	186	127	110	190	117	48	89	65	210	229	260	M10	13°	12	30°	30°	21.5
SNM 83	3.03.024	Rp 2	Rc1 ¹ / ₄	200	165	140	229	124	48	105	65	251	270	308	M12	15°	12	40°	47°	34
SNM 84	3.02.023	Rp 3	Rc 2	241	165	178	229	140	57	135	83	251	270	308	M12	15°	12	40°	47°	38
SNM 85	3.01.040	Rp 4	Rc2 ¹ / ₂	370	287	241	375	225	60	194	94	406	438	502	M16	15°	16	39°	56°	150.0

WARNING: The data outlined is for information only and does not form part of any contract. Our policy is one of continuous improvement and we therefore reserve the right to modify specifications or dimensions without prior warning. Situations dangerous to personnel and property can develop from incorrect installation and operation of combustion equipment. Fives North American Combustion UK, Ltd urges compliance with International, National and Local Safety Standards and that installation is carried out by properly qualified personnel.

Fives North American Combustion UK, Ltd.

Heath Mill Road, Wolverhampton WV5 8BD England Tel +44 (0) 1902 891200 Fax +44 (0) 1902 895552

FNAC 8/2009 SNM