



### GHV / GMV / GLV – Features

- Velocities up to 150m/s
- Short flame lengths
- High stoichiometric turndown
- Ideal for sequential firing
- Suitable for most commercial fuel gases
- Choice of silicon carbide, alloy or refractory firing tubes
- Robust construction
- Pre-heated air up to 350°C as standard
- Standard direct spark ignition and flame rod supervision – UV option available

Standard GHV, GMV and GLV burners use silicon carbide firing tubes which are suitable for most applications up to 1400°C. For temperatures to 1000°C they may be fitted with alloy firing tubes. Thick furnace walls may use extended firing tubes – contact FNAC for application-specific details. Refractory castable tiles are also offered – cast into stainless steel jackets and supplied with a loose, slip-on, mild steel mounting flange to be welded at the required wall thickness.

An optional burner construction (to be specified at time of order) allows the use of pre-heated combustion air up to 350°C.

GHV burners have high velocity tiles for a combustion exit velocity of up to 150m/s. GMV burners provide exit velocity of up to 100m/s, GLV up to 50m/s.

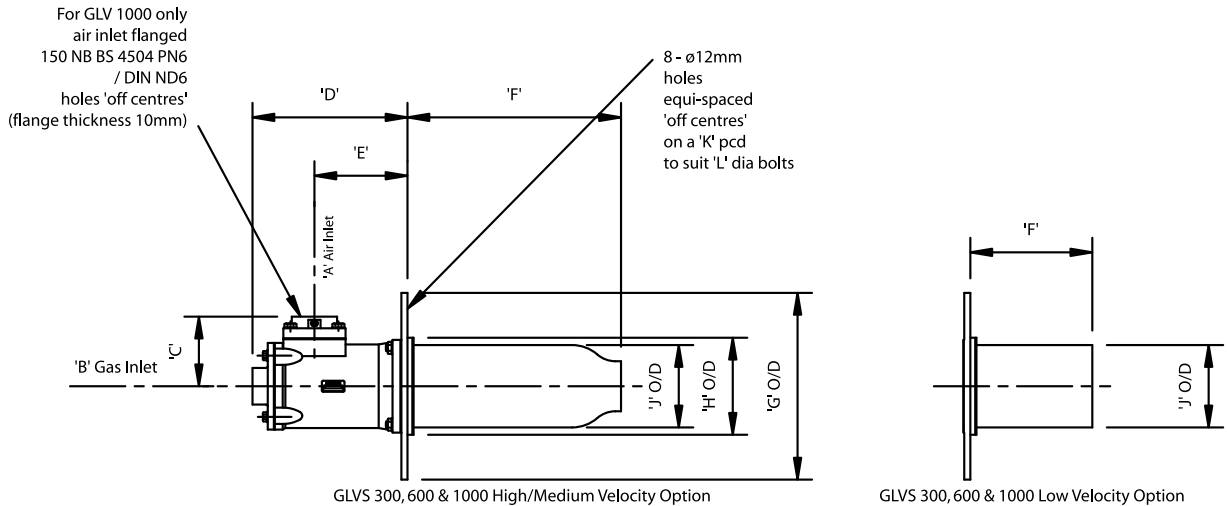
All standard burners in these series are fitted with a direct spark igniter and flame rod. UV scanning (specified at time of order) is an available option with all of the burners. Pilot ignition may be fitted on burners using castable refractory tiles if desired.

### Capacities and Specifications

Model No.	Part No.	Capacity kW	Air Pressure* mbar	Gas Pressure* mbar	Outlet Velocity m/s	Flame Length mm	Weight (kg)
GLV 300	2.20.360	348	20	10	50	900	18
GLV 660	2.20.361	765	20	10	50	900	31
GLV1000	2.20.362	1160	20	10	50	900	33
GMV 300	2.20.363	348	30	20	90	1000	19
GMV 660	2.20.364	765	30	20	90	1000	33
GMV 1000	2.20.365	1160	30	20	90	1000	35
GHV 300	2.20.366	348	50	40	150	1100	19
GHV 660	2.20.367	765	50	40	150	1100	33
GHV 1000	2.20.368	1160	50	40	150	1100	35

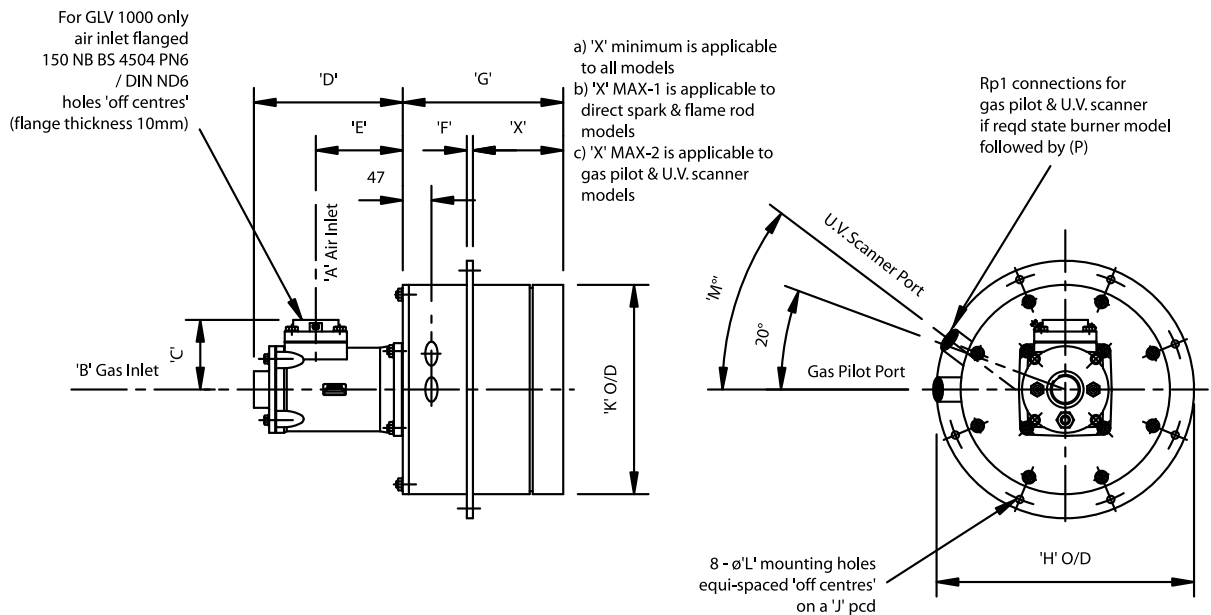
Note: Minimum required pressure differential across the burner – based on zero chamber pressure

### GHV / GMV / GLV Silicon Carbide Burner



Model No.	Dimensions mm										
	A	B	C	D	E	F	G	H	J	K	L
GHVS/GMVS 300	Rp2 <sup>1/2</sup>	Rp1 <sup>1/2</sup>	116	254	152	345	256	200	140	225	M12
GHVS/GMVS 660	Rp4	Rp2	155	342	216	395	306	239	183	269	M12
GHVS/GMVS 1000	150 NB	Rp2	200	398	231	445	370	N/A	275	340	M14
GLVS 300	Rp2 <sup>1/2</sup>	Rp2 <sup>1/2</sup>	116	254	152	200	256	200	140	225	M12
GLVS 660	Rp4	Rp2	155	342	216	200	306	239	183	269	M12
GLVS 1000	150 NB	Rp2	200	398	231	200	370	N/A	275	340	M14

### GHV / GMV / GLV Series Burner Tile Option



Model No.	Dimensions mm														
	A	B	C	D	E	F	G	H	J	K	L	M	X MIN	X MAX1	X MAX2
GHV & GMV 300	Rp2 <sup>1/2</sup>	Rp1 <sup>1/2</sup>	116	254	143	10	450	366	336	285	12	34°	250	365	340
GHV & GMV 660	Rp4	Rp2	155	342	207	10	510	426	396	345	12	37°	300	425	400
GHV & GMV 1000	150 NB	Rp2	200	372	207	12	560	456	426	375	14	40°	350	475	450
GLV 300	Rp2 <sup>1/2</sup>	Rp2 <sup>1/2</sup>	116	254	143	10	300	366	336	285	12	34°	150	215	190
GLV 660	Rp4	Rp2	155	342	207	10	300	426	396	345	12	37°	150	215	190
GLV 1000	150 NB	Rp2	200	372	207	12	380	456	426	375	14	40°	200	295	270

**WARNING:** The data outlined is for information only and does not form part of any contract. Our policy is one of continuous improvement and we therefore reserve the right to modify specifications or dimensions without prior warning. Situations dangerous to personnel and property can develop from incorrect installation and operation of combustion equipment. Fives North American Combustion UK, Ltd urges compliance with International, National and Local Safety Standards and that installation is carried out by properly qualified personnel.

Fives North American Combustion UK, Ltd.

Heath Mill Road, Wolverhampton WV5 8BD England Tel +44 (0) 1902 891200 Fax +44 (0) 1902 895552

FNAC 8/2009 GHV