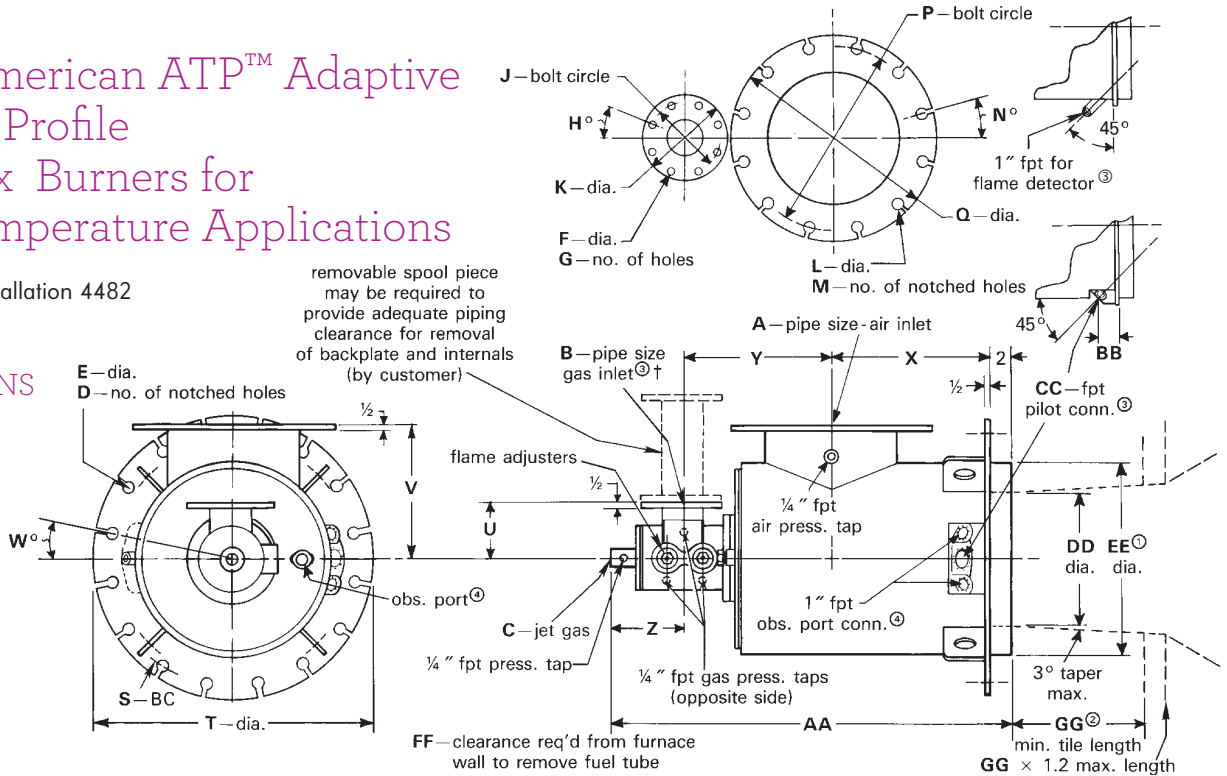


North American ATP™ Adaptive Thermal Profile Low NO_x Burners for High Temperature Applications

Dimensions & Installation 4482

DIMENSIONS inches



Burner designation	A ^③	B ^{③†}	C	D	E	F	G	H°	J	K	L	M	N°	P	Q	S	T	U
4482-8	6	2½	¾	16	¾						7/8	8	22½	9½	11	24½	26¼	5½
4482-9	8	2½	¾	16	¾						7/8	8	22½	11¼	13½	24½	26¼	5½
4482-10-A	10	2½	¾	20	¾						1	12	15	14¼	16	26½	28¼	5½
4482-10-B	10	2½	¾	20	¾						1	12	15	14¼	16	26½	28¼	5½
4482-12	12	2½	¾	20	¾						1	12	15	17	19	28½	30¼	5½
4482-14	13⅞	2½	¾	20	7/8						1⅛	12	15	18¾	21	30½	32¼	5½
4482-16	15⅞	2½	¾	24	7/8						1⅛	16	11¼	21¼	23½	32½	34¼	5½
4482-18	17⅞	4	1	24	7/8	¾	8	22½	7½	9	1¼	16	11¼	22¾	25	36½	38¼	7⅛
4482-20	19⅞	4	1	24	7/8	¾	8	22½	7½	9	1¼	20	9	25	27½	38½	40¼	7⅛
4482-22	21⅞	4	1	24	7/8	¾	8	22½	7½	9	1¼	20	9	26	29½	40½	42¼	7⅛
4482-24	23⅞	4	1	24	7/8	¾	8	22½	7½	9	1¾	20	9	29½	32	42½	44¼	7⅛

†-8 thru -16, 2½" threaded; -18 thru -24, 4" ANSI flange

Burner designation	V	W°	X	Y	Z	AA	BB	CC ^③	DD	EE ^①	FF	GG ^②	Pilot assembly designation
4482-8	13½	11¼	16	12¾	7⅞	38⅞	2¾	1¼	14	20	63⅞	11	4014-1-T
4482-9	13½	11¼	16	12¾	7⅞	38⅞	2¾	1¼	14	20	63⅞	11	4014-1-T
4482-10-A	14½	9	18	14¾	7⅞	41¾	2¾	1½	16	22	70⅞	13	4014-2-T
4482-10-B	14½	9	18	14¾	7⅞	41¾	2¾	1½	16	22	70⅞	13	4014-2-T
4482-12	15½	9	20½	15⅞	7⅞	45¾	2⅞	2	18	24	79⅞	14	4014-3-AT
4482-14	16½	9	21½	16⅞	7⅞	47¾	2⅞	2	20	26	82⅞	16	4014-3-AT
4482-16	17½	7½	22	17½	7⅞	48⅞	2⅞	2	22	28	85	18	4014-3-AT
4482-18	19½	7½	22½	19⅞	8¼	52¾	2⅞	2	26	32	92¾	21	4014-3-BT
4482-20	21½	7½	23½	20½	8¼	54¼	2⅞	2	28	34	93½	22	4014-3-BT
4482-22	22½	7½	24½	22¾	8¼	57⅞	2⅞	2	30	36	99¼	24	4014-3-BT
4482-24	23½	7½	25½	23½	8¼	59¼	2⅞	2	32	38	103½	26	4014-3-BT

① Furnace opening should be ½" larger than dimension EE for -8 thru -14; ¾" larger than dimension EE for -16 thru -24.

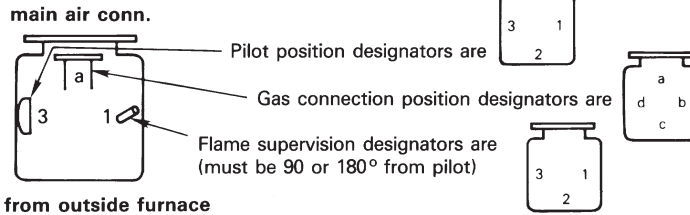
② Any tile length greater than GG x 1.2 should have a 30° angled flare from the standard tile extension.

③ Burner must be ordered with pilot, gas, and flame detector locations designated. See reverse side.

④ Backplate and pilot observation ports included with burner.

DIMENSIONS SHOWN ARE SUBJECT TO CHANGE. PLEASE OBTAIN CERTIFIED PRINTS FROM FIVES NORTH AMERICAN COMBUSITON, INC. IF SPACE LIMITATIONS OR OTHER CONSIDERATIONS MAKE EXACT DIMENSION(S) CRITICAL.

Arrangement Designators are specified relative to the main air connection at 12 o'clock and should be listed for **pilot, gas, and flame detector in that order**. Good practice dictates that neither the pilot nor the flame supervision device be on the bottom of the burner.



Burners are designed to be mounted no more than 15° from horizontal. Contact your North American Sales Engineer if your application requires a greater angle.

ATP Burner Tile Installation Recommendations for Hard Refractory Lined Furnaces

FIGURE 1

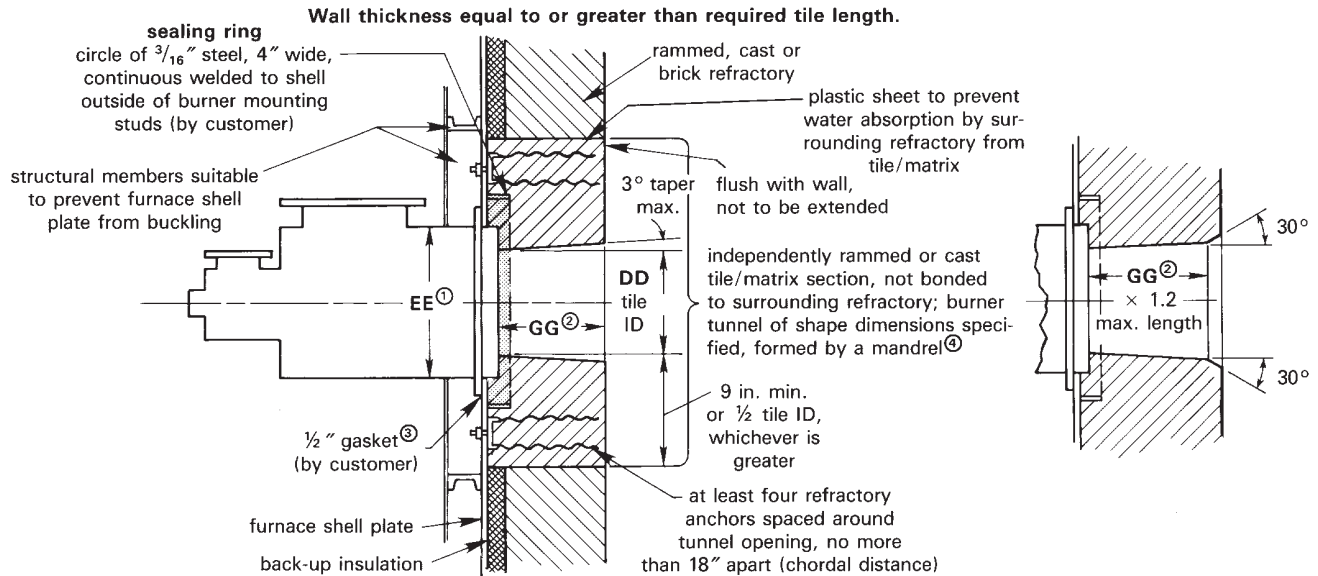
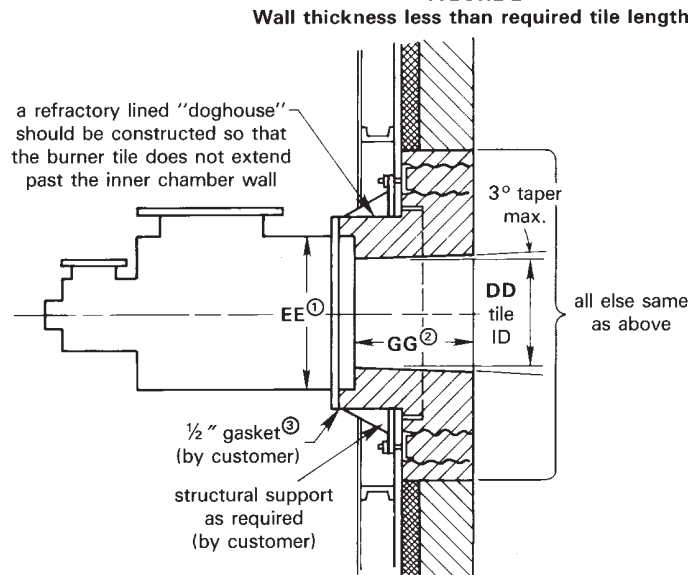


FIGURE 2



- ① Furnace opening should be $\frac{1}{2}$ " larger than dimension EE for -8 thru -14; $\frac{3}{4}$ " larger than dimension EE for -16 thru -24.
- ② Any tile length greater than GG $\times 1.2$ should have a 30° angled flare from the standard tile extension.
- ③ Two wraps of $\frac{1}{2}$ " soft fiberglass rope (Davlyn #100801 or equivalent) suitable for 1000 F service. North American can supply as part no. R540-0365. Specify length when ordering.
- ④ Expansion joints must be provided in surrounding refractory to prevent pressure being exerted on cast or rammed burner tunnel section.