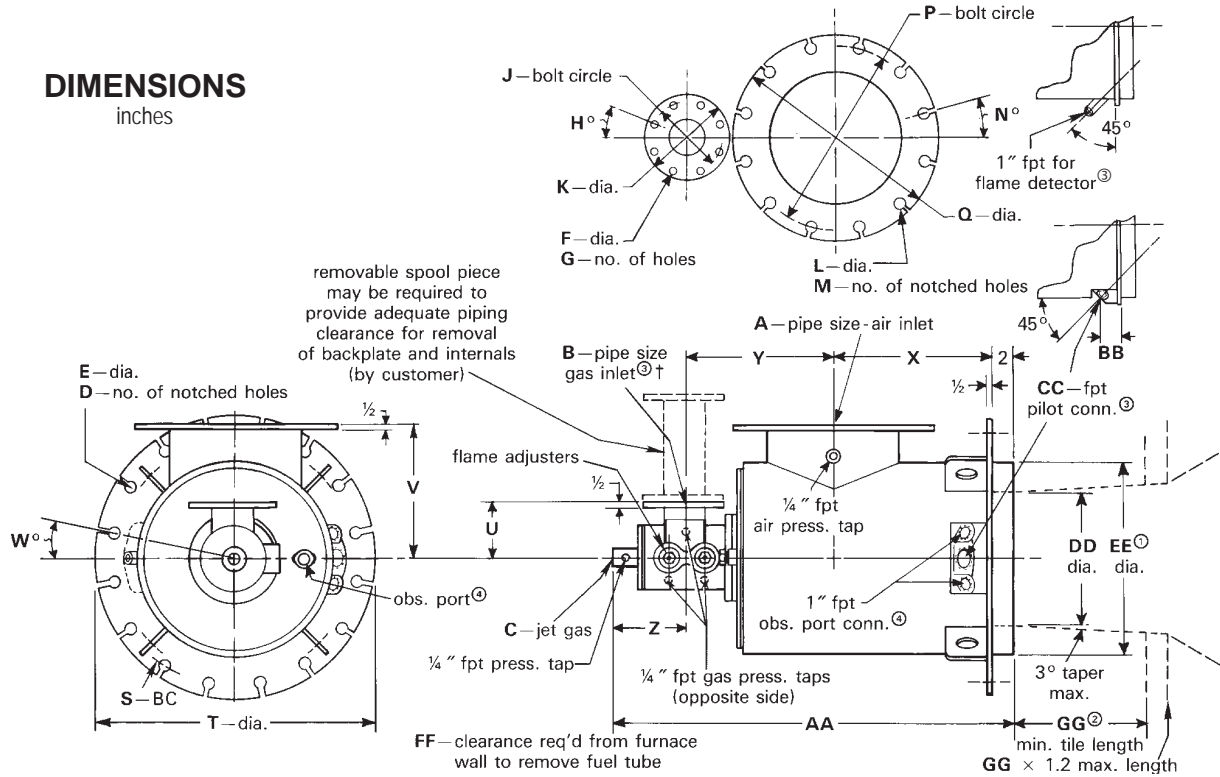




DIMENSIONS

inches



Burner designation	A ^③	B ^{③†}	C	D	E	F	G	H [°]	J	K	L	M	N [°]	P	Q	S	T	U
4384-8	6	2½	¾	16	¾	-	-	-	-	-	7/8	8	22½	9½	11	18½	20¼	5½
4384-9	8	2½	¾	16	¾	-	-	-	-	-	7/8	8	22½	11¾	13½	20½	22¼	5½
4384-10-A	10	2½	¾	16	¾	-	-	-	-	-	1	12	15	14¼	16	22½	24¼	5½
4384-10-B	10	2½	¾	16	¾	-	-	-	-	-	1	12	15	14¼	16	22½	24¼	5½
4384-12	12	2½	¾	16	¾	-	-	-	-	-	1	12	15	17	19	24½	26¼	5½
4384-14	14	2½	¾	20	¾	-	-	-	-	-	1½	12	15	18¾	21	26½	28¼	5½
4384-16	16	2½	¾	20	¾	-	-	-	-	-	1½	16	11¼	21¼	23½	28½	30¼	5½
4384-18	18	4	1	20	7/8	¾	8	22½	7½	9	1¼	16	11¼	22¾	25	30½	32¼	7½
4384-20	20	4	1	24	7/8	¾	8	22½	7½	9	1¼	20	9	25	27½	32½	34¼	7½
4384-22	22	4	1	24	7/8	¾	8	22½	7½	9	1¼	20	9	26	29½	34½	36¼	7½
4384-24	24	4	1	24	7/8	¾	8	22½	7½	9	1¾	20	9	29½	32	36½	38¼	7½
4384-26	26	4	1	24	7/8	¾	8	22½	7½	9	1¾	24	7½	32	34	38½	40½	7½

† -8 thru -16, 2½" threaded; -18 thru -26, 4" ANSI flange

Burner designation	V	W [°]	X	Y	Z	AA	BB	CC ^③	DD	EE ^①	FF	GG ^②	Pilot assembly designation	Wt. lbs.
4384-8	9½	11¼	10	11⅞	7⅞	31¼	2¾	1¼	8½	14	57⅞	5	4014-1-T	240
4384-9	11	11¼	13	12¾	7⅞	35⅞	2¾	1¼	10¼	16	57⅞	6	4014-1-T	290
4384-10-A	12½	11¼	15	14¾	7⅞	38¾	2¾	1½	11¼	18	64⅞	7	4014-2-T	365
4384-10-B	12½	11¼	15	14¾	7⅞	38¾	2¾	1½	12¼	18	64⅞	8	4014-2-T	355
4384-12	13½	11¼	17½	15⅞	7⅞	42¾	2⅞	2	14¼	20	73⅞	9	4014-3-AT	410
4384-14	14½	9	18½	16⅞	7⅞	44¾	2⅞	2	16¼	22	76⅞	10	4014-3-AT	465
4384-16	15½	9	19	17⅞	7⅞	45¾	2⅞	2	18¼	24	78⅞	11	4014-3-AT	515
4384-18	16½	9	19½	19⅞	8¼	49¼	2⅞	2	20¼	26	86¾	12	4014-3-BT	635
4384-20	17½	7½	20½	20½	8¼	51⅞	2⅞	2	22¼	28	87½	13	4014-3-BT	685
4384-22	18½	7½	21½	22⅞	8¼	54	2⅞	2	24¼	30	93¼	14	4014-3-BT	760
4384-24	19½	7½	22½	23⅞	8¼	56⅞	2⅞	2	26¼	32	97½	15	4014-3-BT	820
4384-26	20½	7½	23½	24½	8¼	58¼	2⅞	2	28¼	34	103	16	4014-3-BT	940

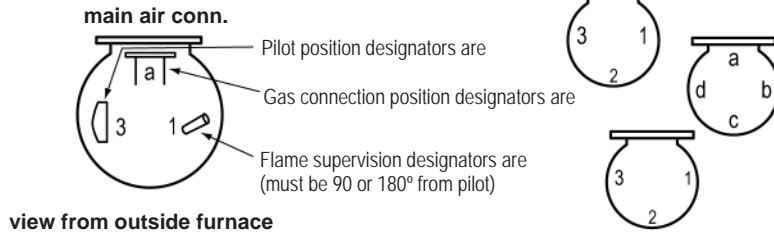
① Furnace opening should be ½" larger than dimension EE for -8 thru -14; ¾" larger than dimension EE for -16 thru -26.

② Any tile length greater than GG x 1.2 should have a 30° angled flare from the standard tile extension.

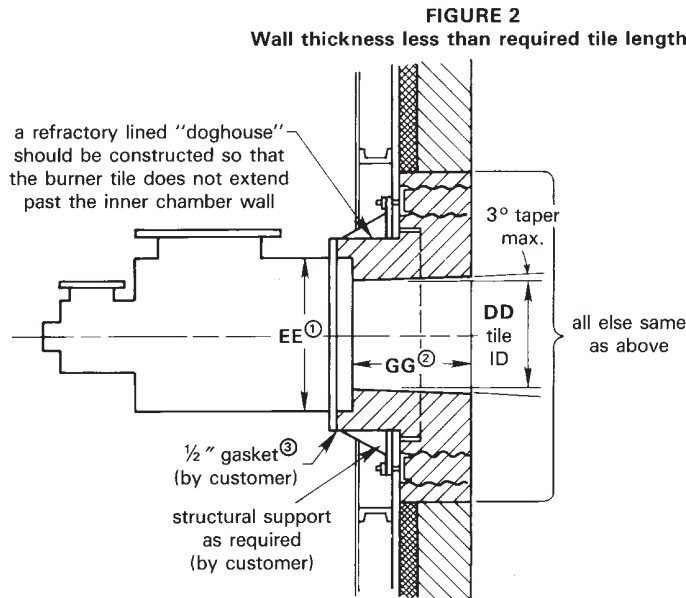
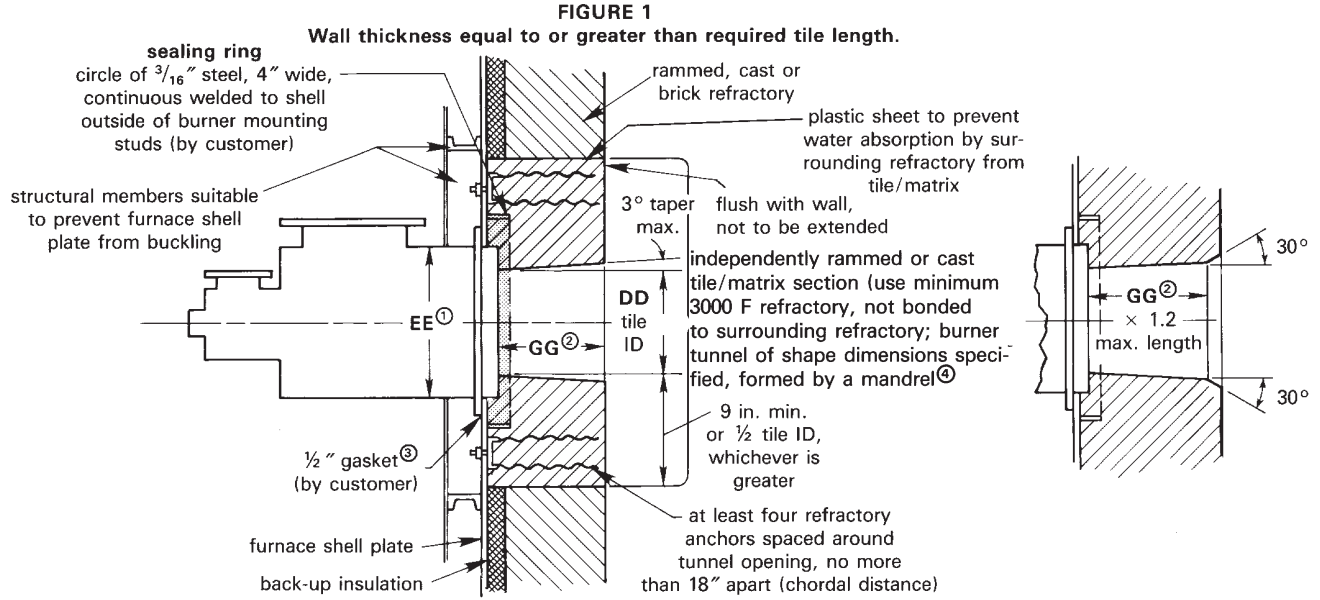
③ Burner must be ordered with locations designated. See reverse side.

④ Backplate and pilot observation ports included with burner.

Arrangement Designators are specified relative to the main air connection at 12 o'clock and should be listed for **pilot, gas, and flame detector in that order**. Good practice dictates that neither the pilot nor the flame supervision device be on the bottom of the burner.



Fuel Directed Burner Tile Installation Recommendations for Hard Refractory Lined Furnaces



- ① Furnace opening should be 1/2" larger than dimension EE for -8 thru -14; 3/4" larger than dimension EE for -16 thru -26.
- ② Any tile length greater than GG x 1.2 should have a 30° angled flare from the standard tile extension.
- ③ Two wraps of 1/2" soft fiberglass rope (Davlyn #100801 or equivalent) suitable for 1000 F service. Fives North American can supply as part no. R540-0365. Specify length when ordering.
- ④ Expansion joints must be provided in surrounding refractory to prevent pressure being exerted on cast or rammed burner tunnel section.

WARNING: Situations dangerous to personnel and property may exist with the operation and maintenance of any combustion equipment. The presence of fuels, oxidants, hot and cold combustion products, hot surfaces, electrical power in control and ignition circuits, etc., are inherent with any combustion application. Parts of this product may exceed 160F in operation and present a contact hazard. Fives North American Combustion, Inc. urges compliance with National Safety Standards and Insurance Underwriters recommendations, and care in operation.