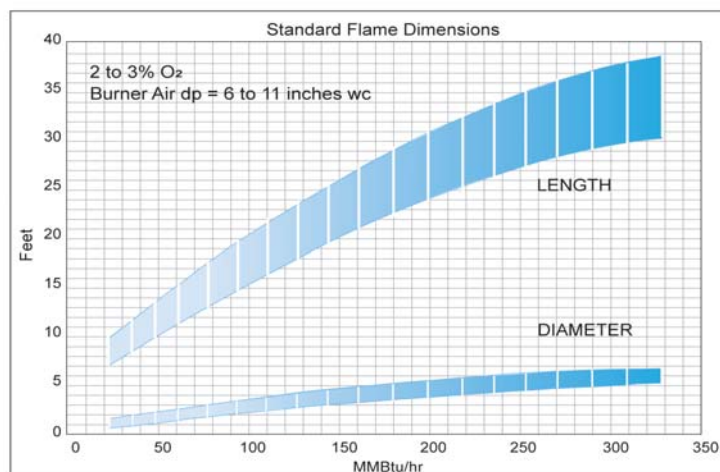
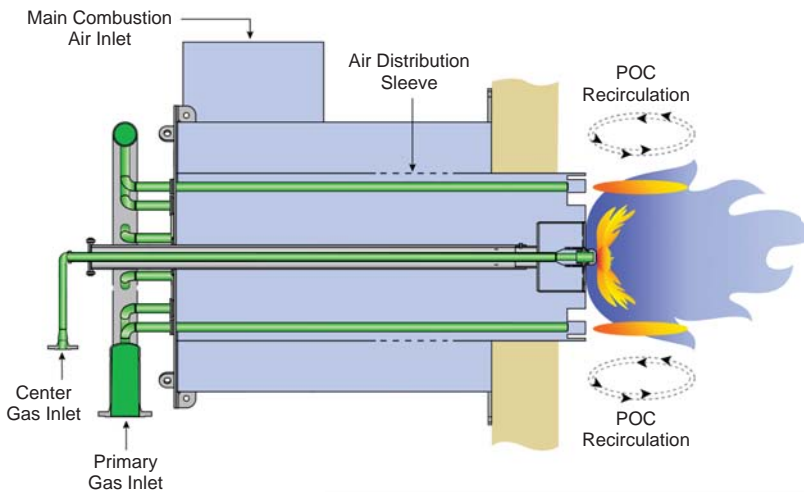


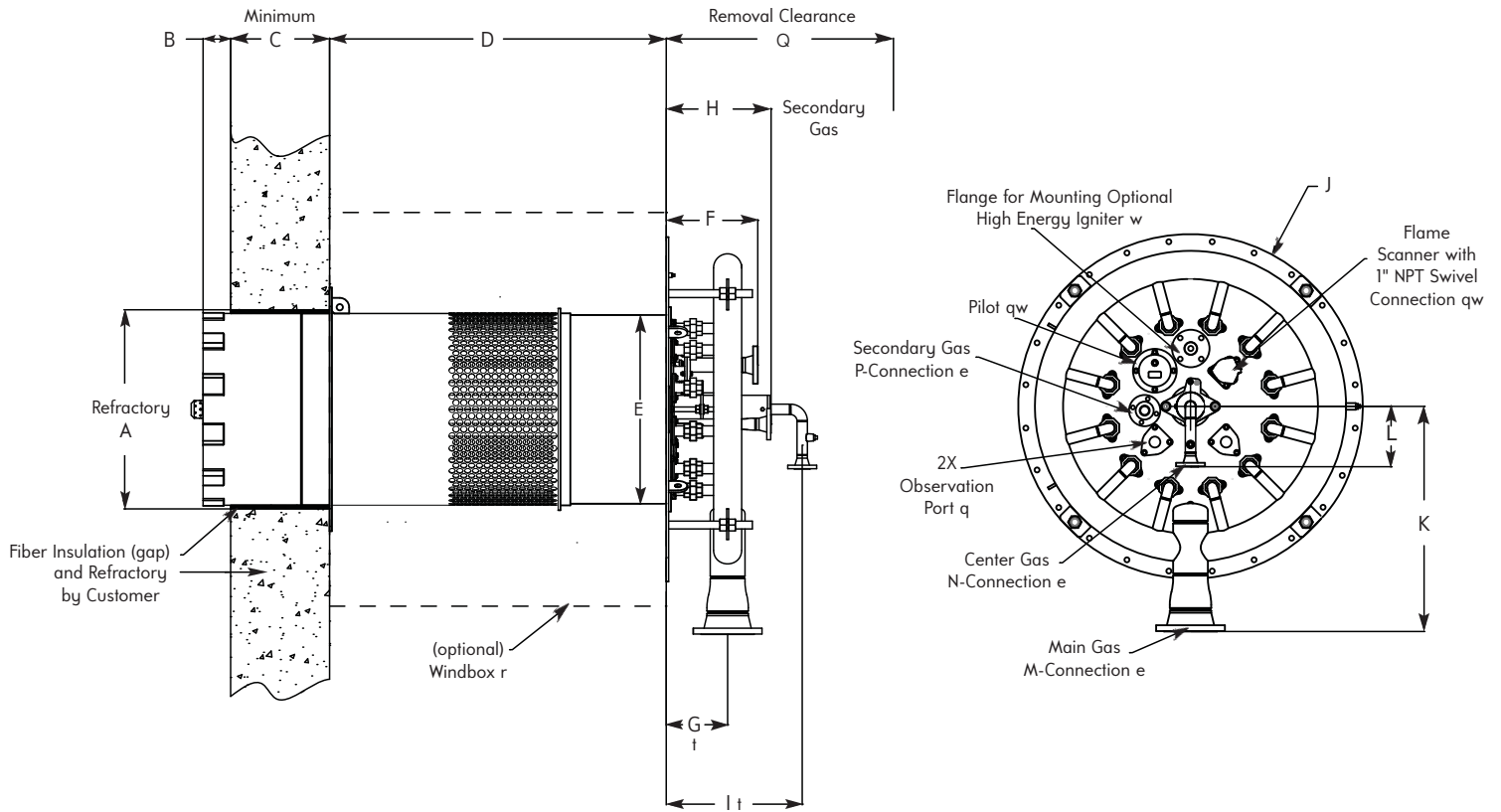
LoNO_x Flam Gas Burners

FEATURES and BENEFITS

- Proven LoNO_x technology for new or retrofit single and multiple burner applications
- Adaptable flame shape
- Superior performance for steam systems requiring NO_x emissions from 20-50ppm
- High turndown and flame stability
- Robust refractory-free design
- Highest efficiency with low excess air
- Burner capacities to 350 MM Btu/hr
- Fully packaged systems available for boilers and steam generators
- Over 400 installations in service since 1995



DIMENSIONS



Burner Capacity MM Btu/h	A in.	B in.	C in.	D in.	E in.	F in.	G in.	H in.	I in.	J in.	K in.	L in.	M ANSI 150#	N ANSI 150#	P ANSI 150#	Q in.	Burner Only Wt. lbs.
30	18.5	2.8	1.6	35.4	17.5	14.4	9.4	N/A	18.3	36.3	20.1	11.0	3"	1"	N/A	64.1	1005
35	19.9	2.8	2.8	37.4	18.9	14.4	9.4	N/A	20.2	36.3	20.1	11.4	3"	1"	N/A	69.2	1120
40	21.5	3.3	3.1	39.4	20.5	14.4	9.4	N/A	20.2	36.3	20.1	12.2	3"	1"	N/A	72.0	1255
50	24.2	3.9	3.9	41.3	23.2	14.4	9.8	N/A	20.2	45.3	24.8	13.4	4"	1"	N/A	75.3	1425
60	25.6	3.9	4.7	41.3	24.6	14.4	9.8	N/A	20.2	45.3	24.8	14.2	4"	1"	N/A	76.1	1465
70	27.2	3.9	5.9	43.3	26.2	14.4	9.8	N/A	20.2	45.3	24.8	15.0	4"	1 1/4"	N/A	79.3	1520
85	29.5	3.9	7.1	47.2	28.1	14.4	9.8	N/A	18.3	45.3	24.8	15.7	4"	1 1/4"	N/A	82.5	1705
95	32.1	4.4	7.9	47.2	30.7	14.4	10.2	N/A	18.3	56.3	30.5	16.9	4"	1 1/4"	N/A	83.8	1895
120	34.4	4.4	9.4	51.2	33.1	14.4	11.0	17.5	20.2	56.3	30.5	18.1	4"	1 1/4"	1 1/4"	91.2	2065
140	36.6	4.4	10.6	55.1	35.2	14.4	11.0	17.5	20.2	56.3	30.5	19.3	6"	1 1/2"	1 1/4"	96.3	2250
160	40.0	5.4	11.8	57.1	38.6	14.4	11.0	17.5	20.2	68.4	35.8	20.5	6"	1 1/2"	1 1/4"	100.5	2580
195	42.5	5.4	13.4	61.0	41.1	14.4	11.0	17.5	20.2	68.4	35.8	16.5	6"	2"	1 1/4"	106.0	2730
220	44.9	5.4	14.6	65.0	43.5	14.4	11.0	17.5	20.2	68.4	35.8	17.7	6"	2"	1 1/2"	111.2	2930
270	50.0	6.4	16.9	68.9	48.6	14.4	12.2	17.5	20.2	85.9	42.1	19.7	8"	3"	1 1/2"	118.4	3715
320	54.9	7.5	18.5	76.8	53.5	14.4	12.2	17.5	20.2	101.8	42.1	21.7	8"	3"	1 1/2"	129.0	4145

Notes:

- q Flame scanner, observation ports and pilot connection locations are interchangeable.
- w Contact Fives for UV scanner, pilot and high energy spark igniter options.
- e Contact Fives for connection positions and flex hose options.
- r Contact Fives for windbox options (new or retrofit installations).
- † Position can be mechanically adjusted during commissioning to optimize performance.

WARNING: Situations dangerous to personnel and property may exist with the operation and maintenance of any combustion equipment. The presence of fuels, oxidants, hot and cold combustion products, hot surfaces, electrical power in control and ignition circuits, etc., are inherent with any combustion application. Parts of this product may exceed 160F in operation and present a contact hazard. Fives North American Combustion, Inc. urges compliance with National Safety Standards and Insurance Underwriters' recommendations, and care in operation.



CONTACT US:
Fives North American Combustion, Inc.
 4455 East 71st Street - Cleveland, OH 44105 - USA
 Tel: +1 216 271 600 - Fax: +1 216 641 7852
 Email: fna.sales@fivesgroup.com

www.fivesgroup.com