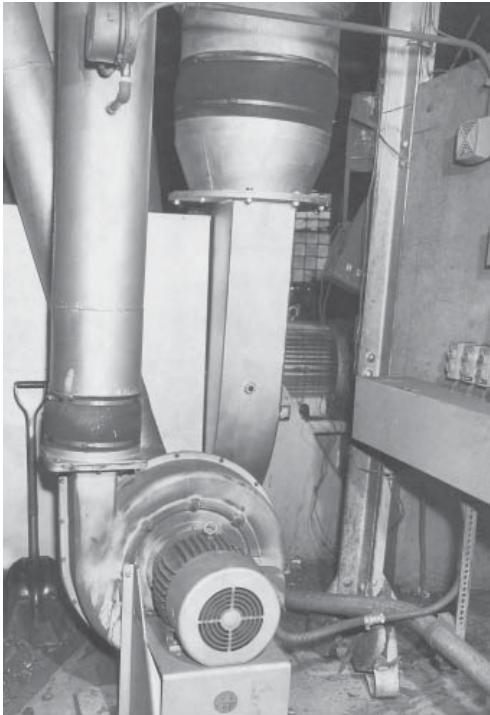
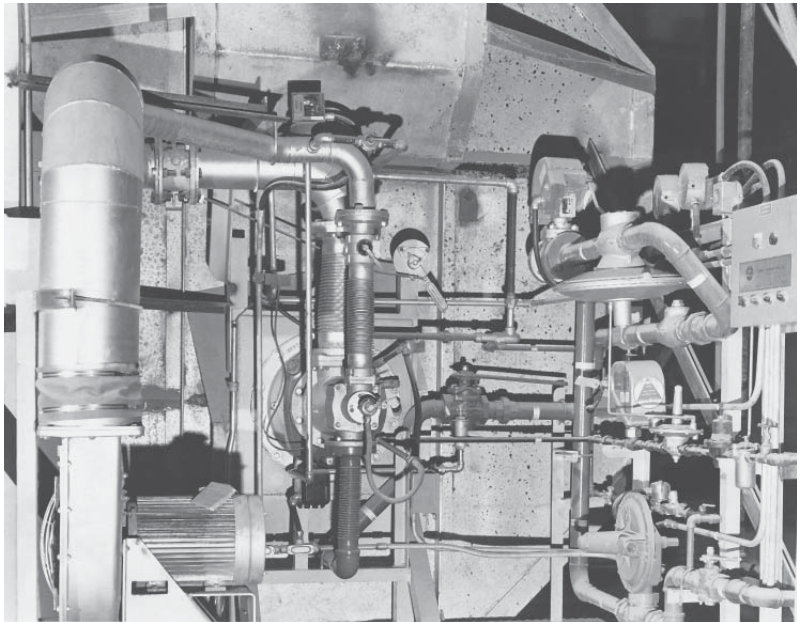


North American Blower Sleeves for Low Pressure Air 2" through 24" Pipe



Blower sleeves on outlets of both combustion air and atomizing air blowers.

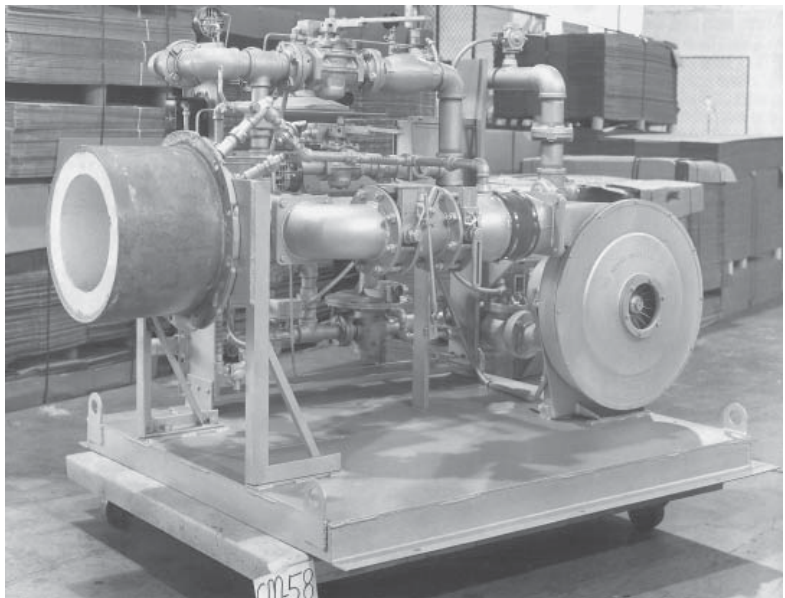


In this installation, a slight misalignment flexes blower sleeve instead of stressing blower housing.

2947 Sleeves slip over threaded or unthreaded ends of standard steel pipe.

Connected to the inlet and/or discharge of a blower, they eliminate strains on blower housings caused by misaligned pipe and vibration.

These sleeves simplify blower installation and help avoid stresses on the blower that would shorten its life.



Flexible sleeve on blower outlet is part of this North American pre-packaged air heater assembly, shown here ready for shipment.

2947 Blower Sleeves are made of silicone impregnated two-ply woven fiberglass and meet National Fire Protection Association Specifications 522 for fire, fungus, fuel oil, and high temperature resistance. They withstand temperatures up to 550 F.

Included with each sleeve are stainless steel worm drive clamps for each end.

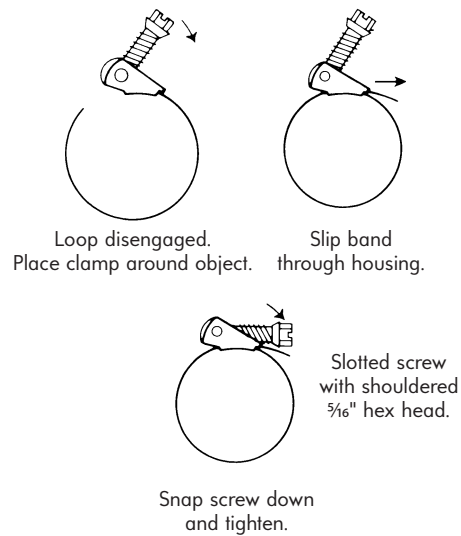
Clamps have a flip-up adjusting screw that allows clamp to be pulled up snugly by hand. Then the screw is snapped down into place and clamp given final tightening with screwdriver or nut driver. Resulting tension locks the screw in place. It cannot be flipped-up or even pried up for quick disengagement unless it is loosened with screwdriver or nut driver.

One clamp for each end suffices for pipes through 10" size.

For 12" and larger, two clamps per end are supplied and band of one is slipped into housing of the other to form one large clamp.

For neatness and safety, any excess length of band should be cut off after installation.

SWIVEL-ACTION LOCKING



Sleeve designation	Nominal pipe size, inches	Sleeve dimensions in inches			Number of clamps for each end	Clamp designation(s)	Total wt, lb
		ID	OD	Length			
2947-4	2	2 ³ / ₈	2 ¹ / ₂	6	1	R120-2425	0.4
2947-5	2 ¹ / ₂	2 ⁷ / ₈	3	6	1	R120-2425	0.4
2947-6	3	3 ¹ / ₂	3 ⁵ / ₈	6	1	R120-2425	0.4
2947-7	4	4 ¹ / ₂	4 ⁵ / ₈	6	1	R120-2425	0.5
2947-8	6	6 ⁵ / ₈	6 ³ / ₄	6	1	R120-2425	0.5
2947-9	8	8 ⁵ / ₈	8 ³ / ₄	6	1	R120-2600	0.7
2947-10	10	10 ³ / ₄	10 ⁷ / ₈	6	1	R120-2600	0.7
2947-12	12	12 ³ / ₄	12 ⁷ / ₈	9	2	R120-2425	1.1
2947-14	14	14	14 ¹ / ₈	9	2	R120-2425† R120-2600†	1.3
2947-16	16	16	16 ¹ / ₈	9	2	R120-2425† R120-2600†	1.4
2947-18	18	18	18 ¹ / ₈	9	2	R120-2425† R120-2600†	1.5
2947-20	20	20	20 ¹ / ₈	9	2	R120-2600	1.7
2947-24	24	24	24 ¹ / ₈	9	2	R120-2600	1.9

† When two different clamps are shown, one of each is used on each end.

DIMENSIONS SHOWN ARE SUBJECT TO CHANGE. PLEASE OBTAIN CERTIFIED PRINTS FROM FIVES NORTH AMERICAN COMBUSTION, INC. IF SPACE LIMITATIONS OR OTHER CONSIDERATIONS MAKE EXACT DIMENSION(S) CRITICAL.

WARNING: Situations dangerous to personnel and property may exist with the operation and maintenance of any combustion equipment. The presence of fuels, oxidants, hot and cold combustion products, hot surfaces, electrical power in control and ignition circuits, etc., are inherent with any combustion application. Parts of this product may exceed 160F in operation and present a contact hazard. Fives North American Combustion, Inc. urges compliance with National Safety Standards and Insurance Underwriters' recommendations, and care in operation.



CONTACT US:
Fives North American Combustion, Inc.
 4455 East 71st Street - Cleveland, OH 44105 - USA
 Tel: +1 216 271 6000 - Fax: +1 216 373 4237
 Email: fna.sales@fivesgroup.com

www.fivesgroup.com