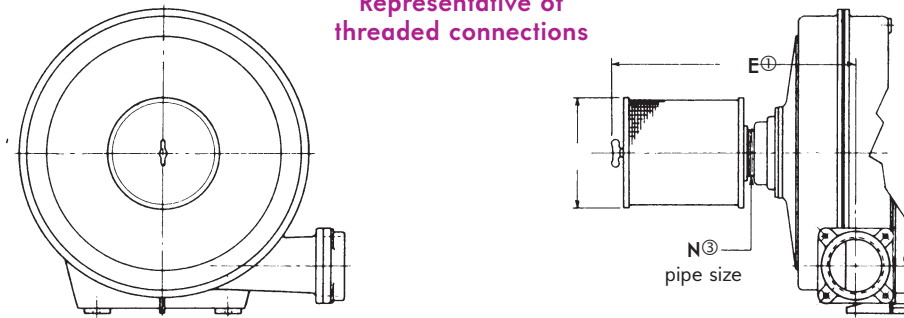


North American Filters for 50 Hertz 2300 Direct Drive Turbo Blowers

Sheet 2923-1
Ref: Bulletin 2923

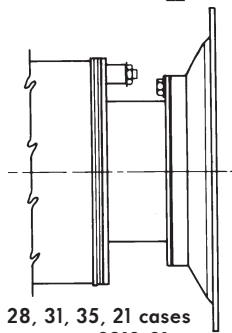
Blower designation	Filter designation ^④	dimensions in inches			approximate weight in lb ^②
		E ^①	N ^③	R	
23055-11/3-__3D	2923-8-11A	15	3	8½	16
23055-14/1-__5D	2923-8-14A	13½	3	8½	16
23055-17/1-__75D	2923-8-17B	14½	4	8½	16
23055-17/1-__1D	2923-8-17B	14½	4	8½	16
23055-24/1-__1.5D	2923-10-24A	19	6	10½	24
23055-24/1-__2D	2923-12-24A	21	6	12½	32
23055-31/1-__3D	2923-14-31A	23¾	8	14½	57
23055-21/1-__5D	2923-18-21A	28¾	10	18½	94
23055-44/1-__7.5D	2923-30-44A	44¼	16	30½	218
23055-44/1-__10D	2923-30-44A	44¼	16	30½	218
23055-44/1-__15D	2923-30-44A	44¼	16	30½	218
2307-11/4-__3D	2923-8-11A	16¼	3	8½	16
2307-19/1-__75D	2923-8-19A	14¼	3	8½	16
2307-19/1-__1D	2923-8-19A	14¼	3	8½	16
2307-26/1-__1.5D	2923-8-26A	16½	6	8½	19
2307-26/1-__2D	2923-10-26A	18¾	6	10½	24
2307-26/1-__3D	2923-12-26A	20¾	6	12½	32
23085-11/4-__3D	2923-8-11A	16¼	3	8½	16
23085-19/1-__75D	2923-8-19A	14¼	3	8½	16
23085-19/1-__1D	2923-8-19A	14¼	3	8½	16
23085-26/1-__1.5D	2923-8-26A	16½	6	8½	24
23085-26/1-__2D	2923-10-26A	18¾	6	10½	24
23085-26/1-__3D	2923-12-26A	20¾	6	12½	32
23085-35/1-__5D	2923-18-35A	27½	8	18½	73
23085-21/1-__7.5D	2923-22-21B	40¾	14	22½	158
23085-21/1-__10D	2923-22-21B	40¾	14	22½	158
23085-41/1-__15D	2923-30-41A	49¾	16	30½	284
23085-41/1-__20D	2923-30-41A	49¾	16	30½	284
2311-14/2-__5D	2923-8-14A	16¾	3	8½	16
2311-14/2-__75D	2923-8-14A	16¾	3	8½	16
2311-17/2-__1D	2923-8-17B	18	4	8½	16
2311-17/2-__1.5D	2923-8-17B	18	4	8½	16
2311-26/1-__2D	2923-8-26A	16½	6	8½	19
2311-26/1-__3D	2923-10-26A	18¾	6	10½	24
2311-26/1-__5D	2923-12-26A	20¾	6	12½	32
2311-28/1-__5D	2923-14-28A	24½	8	14½	57
2311-35/1-__7.5D	2923-18-35B	28¾	8	18½	73
2311-35/1-__10D	2923-18-35B	28¾	8	18½	73
2311-33/1-__15D	2923-22-33A	34½	12	22½	147
2311-33/1-__20D	2923-22.5-33A	40½	12	22½	205
2311-41/1-__25D	2923-30-41A	49¾	16	30½	284
2314-19/2-__1.5D	2923-8-19A	18¾	3	8½	16
2314-26/2-__2D	2923-8-26A	18¾	6	8½	19
2314-26/2-__3D	2923-10-26A	21¾	6	10½	24
2314-26/2-__5D	2923-10-26A	21¾	6	10½	24
2314-35/1-__7.5D	2923-14-35B	24½	8	14½	57
2314-35/1-__10D	2923-18-35B	28¾	8	18½	73
2314-21/1-__15D	2923-18-21A	28¾	10	18½	94
2314-33/1-__20D	2923-22.5-33A	40½	12	22½	205
2314-33/1-__25D	2923-30-33A	42½	12	30½	260
2314-33/1-__30D	2923-30-33A	42½	12	30½	260
23165-14/3-__1.5D	2923-8-14A	20	3	8½	16
23165-19/2-__2D	2923-8-19B	19¾	4	8½	16
23165-26/2-__3D	2923-8-26A	19¼	6	8½	19
23165-26/2-__5D	2923-10-26A	21¾	6	10½	24

Representative of threaded connections

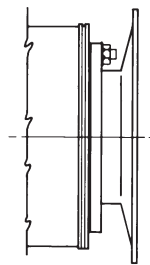


For dimensions and data on filter elements, refer to Bulletin 2923.

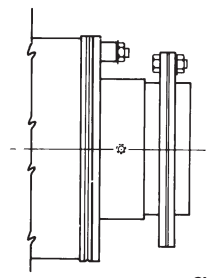
Blower designation	Filter designation ^④	dimensions in inches			approximate weight in lb ^②
		E ^①	N ^③	R	
23165-35/2-__7.5D	2923-14-35A	28	8	14 $\frac{1}{8}$	57
23165-35/2-__10D	2923-14-35A	28	8	14 $\frac{1}{8}$	57
23165-21/1-__15D	2923-18-21A	28 $\frac{3}{8}$	10	18 $\frac{1}{8}$	94
23165-33/1-__20D	2923-22-33A	34 $\frac{1}{2}$	12	22 $\frac{1}{8}$	147
23165-33/1-__25D	2923-22.5-33A	40 $\frac{1}{2}$	12	22 $\frac{1}{8}$	205
23165-33/1-__30D	2923-30-33A	42 $\frac{1}{2}$	12	30 $\frac{1}{8}$	260
2322-19/3-__3D	2923-8-19B	22 $\frac{3}{4}$	4	8 $\frac{1}{8}$	16
2322-19/3-__5D	2923-8-19B	22 $\frac{3}{4}$	4	8 $\frac{1}{8}$	16
2322-28/2-__7.5D	2923-14-28A	29 $\frac{1}{2}$	8	14 $\frac{1}{8}$	57
2322-28/2-__10D	2923-14-28A	29 $\frac{1}{2}$	8	14 $\frac{1}{8}$	5
2322-21/2-__15D	2923-18-21A	33 $\frac{7}{8}$	10	18 $\frac{1}{8}$	94
2322-21/2-__20D	2923-18-21A	33 $\frac{7}{8}$	10	18 $\frac{1}{8}$	94
2322-21/2-__25D	2923-18-21A	33 $\frac{7}{8}$	10	18 $\frac{1}{8}$	94
2322-21/2-__30D	2923-22-21A	37 $\frac{1}{8}$	10	22 $\frac{1}{8}$	115
2322-33/2-__30D	2923-22-33A	46 $\frac{7}{8}$	12	22 $\frac{1}{8}$	147
2322-33/2-__40D	2923-30-33A	48 $\frac{7}{8}$	12	30 $\frac{1}{8}$	260
23305-21/2-__20D	2923-18-21A	33 $\frac{7}{8}$	10	18 $\frac{1}{8}$	94
23305-21/2-__25D	2923-18-21A	33 $\frac{7}{8}$	10	18 $\frac{1}{8}$	94
23305-21/2-__30D	2923-18-21A	33 $\frac{7}{8}$	10	18 $\frac{1}{8}$	94



28, 31, 35, 21 cases
except 2312-21



44 case



33, 41 cases
& 2312-21
SW inlet
supplied

DIMENSIONS SHOWN ARE SUBJECT TO CHANGE. PLEASE OBTAIN CERTIFIED PRINTS FROM FIVES NORTH AMERICAN COMBUSTION, INC. IF SPACE LIMITATIONS OR OTHER CONSIDERATIONS MAKE EXACT DIMENSION(S) CRITICAL.

- ① When installing blower, allow sufficient space beyond filter for removal for cleaning.
- ② Approximate weight, includes filter and flange.
- ③ Nominal pipe size of filter-adapter (6" size and smaller are threaded).
- ④ When ordering complete filter, add a suffix: W for the oil-wetted metal screen filter, or T for the paper (throwaway) model.

To order, specify: complete filter designation for (specify blower designation).

Example: 2923-10-24AW Filter for 23055-24/1-T1.5D Blower

WARNING: Situations dangerous to personnel and property may exist with the operation and maintenance of any combustion equipment. The presence of fuels, oxidants, hot and cold combustion products, hot surfaces, electrical power in control and ignition circuits, etc., are inherent with any combustion application. Parts of this product may exceed 160F in operation and present a contact hazard. Fives North American Combustion, Inc. urges compliance with National Safety Standards and Insurance Underwriters' recommendations, and care in operation.